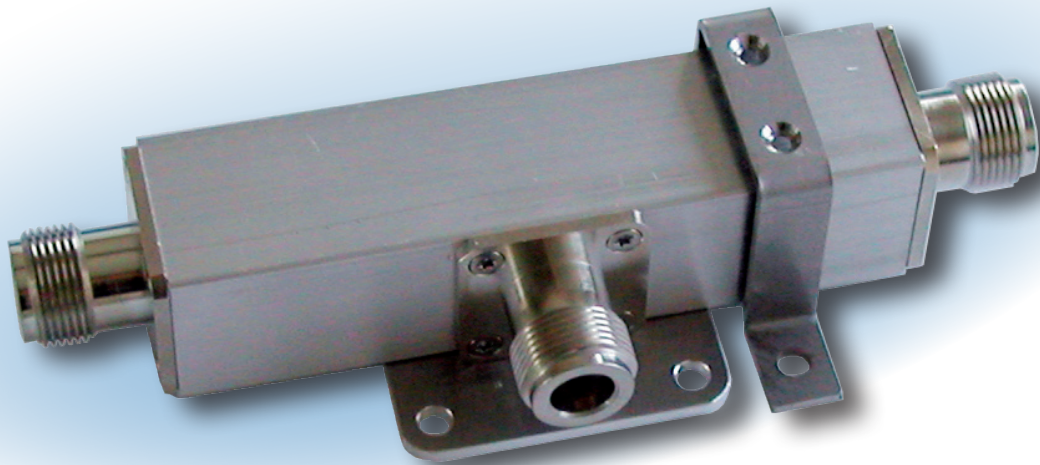
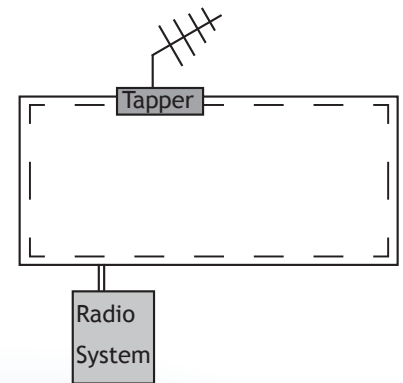


Wideband Low Loss Power Tapper (WLPT 10) 10 dB

- Ruggedized design for use in antenna systems
- 10 dB decoupling over a wide range
- Simple mounting with attached tools



A Tapper is an unidirectional coupler over a broad bandwidth. It works independently of the signal flow with none directional functionality.

The SCHOMANDL Tapper has a frequency range from 150MHz to 2700MHz. This includes the PMR, WIFI and Cellular bands.

The use is mainly for decoupling RF-signals from a main coax cable installation which is used in In-House and tunnel radio systems.

The ruggedized design allows an easy installation in nearly all situations either with included mounting plate or mounting bracket.

Technical Data

Frequency range:	150 ... 2700 MHz
Decoupling:	10 dB
Insertion loss:	< 0,8 dB
SWR at Input:	≤ 1,4
Max. Power:	300 W
Impedance:	50 Ω
Temperature range:	-20 °C ... + 60 °C
Connections:	N-female
Dimensions (WxHxD):	138 mm x 45 mm x 55 mm
Weight:	0,25 kg

Art.-no. : **80001074**